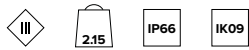
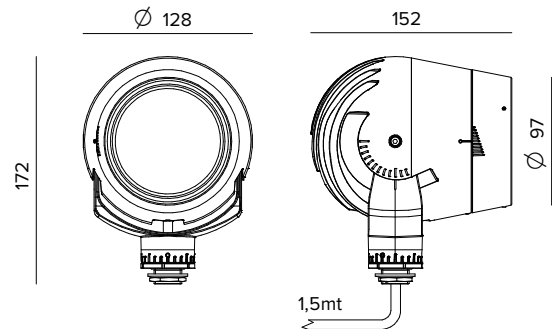


**E012ZMTUWFE | VADER ONE**

Adjustable outdoor professional projector equipped with a zoom optic. Tunable White and multiple dimmer protocols provide extreme flexibility in terms of optical accessories



The fixture's photometric values  
can be found on the following pages



The figures on the drawing are expressed in mm.

**SOURCE**

High efficiency Chip on Board LED Ra90, Tunable White1800K-4000K.

**Energy efficiency class:** G

**Nominal power:** 13W (3000K)

**Nominal flux:** See photometries

**Colour rendering index:** 90

**Rf:** 96

**Rg:** 99

**CCT nominal:** See photometries

**Lifetime (L80/B10):** 86000h tq +25°C

**ILLUMINOTECHNICAL CHARACTERISTICS**

Zoom optic composed of three PMMA elements operating together, a fixed TIR lens and a second adjustable lens. Rotation of 22° using the front sealing ring of the second lens allows for the zoom range between the minimum and maximum beam opening respectively of 20° and 41°. Graduated adjustment scale with 2 steps. Optic group pre-set for the installation of one or more dedicated optical accessories to be ordered separately.

**Optic:** LENS

**Beam angles:** SP-MWFL

**Optical efficiency:** 64%

**Fixture flux:** See photometries

**Luminous efficacy:** See photometries

**Photobiological safety:** Compliant with RG1 low risk group

**MECHANICAL CHARACTERISTICS**

Die-cast aluminium body with 3 layers of protection: anodising, cataphoresis and ferrite colour paint. The optical unit can be adjusted from -20° a +90° on the vertical plane and 355° on the horizontal plane with the possibility to block the beam. Extra-clear tempered front glass glued flush.

**Colour and finish:** Ferrite

**Weight:** 2.15Kg

**Degree of protection:** IP66

**Mechanical Resistance:** IK09

**ELECTRICAL CHARACTERISTICS**

48V DC remote driver and control via the "Control Pod" smart dimming interface. The Control POD makes it possible to control products using DALI, 0-10V, 1-10V and DMX protocols.

**Fixture Power:** 15W

**Power supply:** 48Vdc

**Insulation Class:** CLASS 3

**Driver included:** NO

**Class F:** YES

**Ambient temperature:** -25°C / +50°C

**INSTALLATION**

The product can be installed combined with one of the various installation accessories, to be ordered separately. Surface installation on bases, stakes, bollards, trees and poles.

**WARRANTY**

5 years.

**WARNING**

Luminaire designed for disposal/recycling at end-of-life. Replaceable (LED only) light source by a professional. Replaceable control gear by a professional.

*Due to the technological evolution of the electronic components, the data provided may be updated, and as such, confirmation must be requested during the order process.*

*Luminous flux and power supply have +/-10% tolerances with respect to the indicated value. tq +25°C (CIE 121).*

*We reserve the right to make technical changes.*

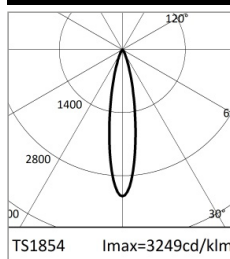
Targetti Sankey S.r.l.  
Via Pratese, 164  
50145 Firenze - Italy  
Tel: +39 055 37911  
targetti.com  
targetti@targetti.com

CCIAA Firenze  
Share Capital:  
€ 500.000,00  
VAT N. (IT):  
01537660480  
R.E.A.: FI-275656

**TARGETTI**

## E012ZMTUWFE | VADER ONE

Adjustable outdoor professional projector equipped with a zoom optic. Tunable White and multiple dimmer protocols provide extreme flexibility in terms of optical accessories



1800K	H(m)	D(m)	Emax(lx)
Ra90		20°	
Fixture Power	15W	1	0.36
Source Flux	1069lm	2	0.72
Fixture Flux	687lm	3	1.07
Efficacy	45lm/W	4	1.43
TS1854	Imax=3249cd/klm	Imax	3473cd



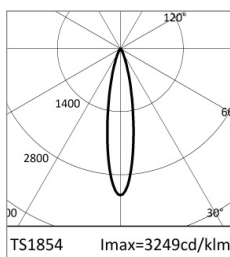
3000K	H(m)	D(m)	Emax(lx)
Ra90		20°	
Fixture Power	15W	1	0.36
Source Flux	1440lm	2	0.72
Fixture Flux	926lm	3	1.07
Efficacy	63lm/W	4	1.43
TS1854	Imax=3249cd/klm	Imax	4678cd

### SP / 18K

CCT nominal	1800K
Nominal flux	1069lm
Fixture flux	687lm
Luminous efficacy	45lm/W

### SP / 30K

CCT nominal	3000K
Nominal flux	1440lm
Fixture flux	926lm
Luminous efficacy	63lm/W



4000K	H(m)	D(m)	Emax(lx)
Ra90		20°	
Fixture Power	15W	1	0.36
Source Flux	1670lm	2	0.72
Fixture Flux	1074lm	3	1.07
Efficacy	70lm/W	4	1.43
TS1854	Imax=3249cd/klm	Imax	5425cd



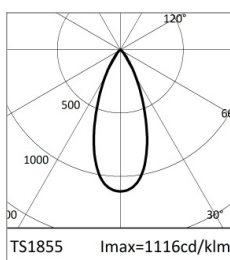
1800K	H(m)	D(m)	Emax(lx)
Ra90		41°	
Fixture Power	15W	1	0.75
Source Flux	1069lm	2	1.51
Fixture Flux	681lm	3	2.26
Efficacy	44lm/W	4	3.02
TS1855	Imax=1116cd/klm	Imax	1193cd

### SP / 40K

CCT nominal	4000K
Nominal flux	1670lm
Fixture flux	1074lm
Luminous efficacy	70lm/W

### WFL / 18K

CCT nominal	1800K
Nominal flux	1069lm
Fixture flux	681lm
Luminous efficacy	44lm/W



3000K	H(m)	D(m)	Emax(lx)
Ra90		41°	
Fixture Power	15W	1	0.75
Source Flux	1440lm	2	1.51
Fixture Flux	917lm	3	2.26
Efficacy	62lm/W	4	3.02
TS1855	Imax=1116cd/klm	Imax	1606cd



4000K	H(m)	D(m)	Emax(lx)
Ra90		41°	
Fixture Power	15W	1	0.75
Source Flux	1670lm	2	1.51
Fixture Flux	1064lm	3	2.26
Efficacy	69lm/W	4	3.02
TS1855	Imax=1116cd/klm	Imax	1863cd

### WFL / 30K

CCT nominal	3000K
Nominal flux	1440lm
Fixture flux	917lm
Luminous efficacy	62lm/W

### WFL / 40K

CCT nominal	4000K
Nominal flux	1670lm
Fixture flux	1064lm
Luminous efficacy	69lm/W

Due to the technological evolution of the electronic components, the data provided may be updated, and as such, confirmation must be requested during the order process. Luminous flux and power supply have +/-10% tolerances with respect to the indicated value. tq +25°C (CIE 121).

We reserve the right to make technical changes.

Targetti Sankey S.r.l.  
Via Pratese, 164  
50145 Firenze - Italy  
Tel: +39 055 37911  
targetti.com  
targetti@targetti.com

CCIAA Firenze  
Share Capital:  
€ 500.000,00  
VAT N. (IT):  
01537660480  
R.E.A: FI-275656

**TARGETTI**

**E012ZMTUWFE | VADER ONE**

Adjustable outdoor professional projector equipped with a zoom optic. Tunable White and multiple dimmer protocols provide extreme flexibility in terms of optical accessories

**Related codes****Power Supply**

Dimensions LxHxP mm	Power	Power supply	Output voltage	IP	Code
225x36x60	60W	220-240Vac	48Vdc	IP20	<b>1T6917EL</b>
240x49x60	130W	220-240Vac	48Vdc	IP20	<b>1T6916EL</b>

Electronic ON-OFF power supply.

Dimensions LxHxP mm	Power	Power supply	Output voltage	IP	Code
225x51x65	70W	220-240Vac	48Vdc	IP67	<b>1E2320</b>
225x51x65	150W	220-240Vac	48Vdc	IP67	<b>1E2321</b>

Electronic ON-OFF power supply.  
Cable length 0.5m (IN and OUT).**Control systems**

Code

**A035**

Control POD.

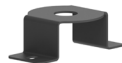
Multi-protocol command and control system for VADER projectors.

The Control POD was developed to make controlling a VADER projector system quick and easy.

The DALI, DMX and ANALOGICO 0-10V / 1-10V compatible protocols make it possible to integrate VADER projectors into a wide range of applications.

48V power supply.

Via DALI protocol, Control POD allows to control VADER projectors with the Casambi system using the accessory codes 1E3048 and 1E4369.

**Accessories****Bracket**

Colour

Code

**A044FE**Bracket for surface installation.  
Powder coated stainless steel.**Mounting System**

Colour

Code

**A040FE**Round base for surface installation of fixture.  
Powder coated aluminium (with a stainless steel fixing bracket).

Colour

Code

**A041FE**Round base plate.  
Powder coated stainless steel.  
**A041FE** - To be completed with A040FE.

Due to the technological evolution of the electronic components, the data provided may be updated, and as such, confirmation must be requested during the order process.

Luminous flux and power supply have +/-10% tolerances with respect to the indicated value. tq +25°C (CIE 121).

We reserve the right to make technical changes.

Targetti Sankey S.r.l.  
Via Pratese, 164  
50145 Firenze - Italy  
Tel: +39 055 37911  
targetti.com  
targetti@targetti.com

CCIAA Firenze  
Share Capital:  
€ 500.000,00  
VAT N. (IT):  
01537660480  
R.E.A.: FI-275656

**TARGETTI**

# E012ZMTUWFE | VADER ONE

Adjustable outdoor professional projector equipped with a zoom optic. Tunable White and multiple dimmer protocols provide extreme flexibility in terms of optical accessories

## Mounting System



H mm	Colour	Code
244	●	<b>A047FE</b>
844	●	<b>A048FE</b>

Spike with base for surface installation.



H mm	Colour	Code
208	●	<b>A050FE</b>
808	●	<b>A051FE</b>

Earthspike.



Colour	Code
●	<b>A042FE</b>

Hexagonal base with a hole for projector surface installation.  
Powder coated die-cast aluminium covering.  
Stainless steel fixing base.



Colour	Code
●	<b>A043FE</b>

Blind hexagonal base.  
Powder coated die-cast aluminium covering.  
Stainless steel fixing base.



Colour	Code
●	<b>A052FE</b>

Pole attachment for a single projector.  
Anodised and powder coated aluminium.  
Pole Ø 60mm.



Colour	Code
●	<b>A053FE</b>

Pole attachment for two projectors.  
Anodised and powder coated aluminium.  
Pole Ø 60mm (+/-2mm).



Ø mm	H mm	Colour	Code
50	232	●	<b>1E3785</b>

Earthspike.  
Powder coated stainless steel.

## Bracket



Colour	Code
●	<b>A049FE</b>

Bracket for installation on trees.  
To be completed with accessory strap A023.  
Powder coated stainless steel.

Due to the technological evolution of the electronic components, the data provided may be updated, and as such, confirmation must be requested during the order process.  
Luminous flux and power supply have +/-10% tolerances with respect to the indicated value. tq +25°C (CIE 121).

We reserve the right to make technical changes.

Targetti Sankey S.r.l.  
Via Pratese, 164  
50145 Firenze - Italy  
Tel: +39 055 37911  
targetti.com  
targetti@targetti.com

CCIAA Firenze  
Share Capital:  
€ 500.000,00  
VAT N. (IT):  
01537660480  
R.E.A: FI-275656

**TARGETTI**

# E012ZMTUWFE | VADER ONE

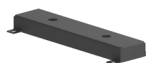
Adjustable outdoor professional projector equipped with a zoom optic. Tunable White and multiple dimmer protocols provide extreme flexibility in terms of optical accessories

## Mounting System



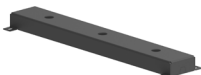
L mm	Code
2000	<b>A023</b>

Strap for tree bracket (tree installation).



Colour	Code
	<b>A045FE</b>

Multiple base for surface installation of 2 projectors.  
Powder coated stainless steel.



Colour	Code
	<b>A046FE</b>

Multiple base for surface installation of 3 projectors.  
Powder coated stainless steel.

## Screen



Colour	Code
	<b>A036FE</b>

Cylindrical screen.  
Powder coated aluminium.  
Short version.



Colour	Code
	<b>A037FE</b>

Asymmetric screen.  
Powder coated aluminium.



Colour	Code
	<b>A038FE</b>

Cylindrical screen.  
Powder coated aluminium.  
Long version with prismatic glass.

## Filter



Colour	Code
	<b>A039FE</b>

Blade of light filter.  
Refractive glass filter with blade of light effect.  
Completed with powder coated aluminum alloy holder ring.

Due to the technological evolution of the electronic components, the data provided may be updated, and as such, confirmation must be requested during the order process.  
Luminous flux and power supply have +/-10% tolerances with respect to the indicated value. tq +25°C (CIE 121).

We reserve the right to make technical changes.

Targetti Sankey S.r.l.  
Via Pratese, 164  
50145 Firenze - Italy  
Tel: +39 055 37911  
targetti.com  
targetti@targetti.com

CCIAA Firenze  
Share Capital:  
€ 500.000,00  
VAT N. (IT):  
01537660480  
R.E.A: FI-275656



**E012ZMTUWFE | VADER ONE**

Adjustable outdoor professional projector equipped with a zoom optic. Tunable White and multiple dimmer protocols provide extreme flexibility in terms of optical accessories

**Connector**

Code

**1E2494**

Multiple connection box IP68.  
1 IN - 3 OUT 4 poles max. wire section 2.5mm<sup>2</sup>.  
Cable diameter range from 6 to 12mm.



Code

**1E2493**

Linear connection box IP68.  
4 poles max. wire section 2.5mm<sup>2</sup>.  
Cable diameter range from 7 to 12mm.

**Tool**

Code

**1E3305**

Tightening wrench for the connector kit.

Due to the technological evolution of the electronic components, the data provided may be updated, and as such, confirmation must be requested during the order process.

Luminous flux and power supply have +/-10% tolerances with respect to the indicated value. tq +25°C (CIE 121).

We reserve the right to make technical changes.

Targetti Sankey S.r.l.  
Via Pratese, 164  
50145 Firenze - Italy  
Tel: +39 055 37911  
targetti.com  
targetti@targetti.com

CCIAA Firenze  
Share Capital:  
€ 500.000,00  
VAT N. (IT):  
01537660480  
R.E.A: FI-275656

**TARGETTI**